



CALIFORNIA WATER SOLUTIONS NOW

**FROM THE
ENVIRONMENTAL WATER CAUCUS**

2012

WHAT WE WILL COVER

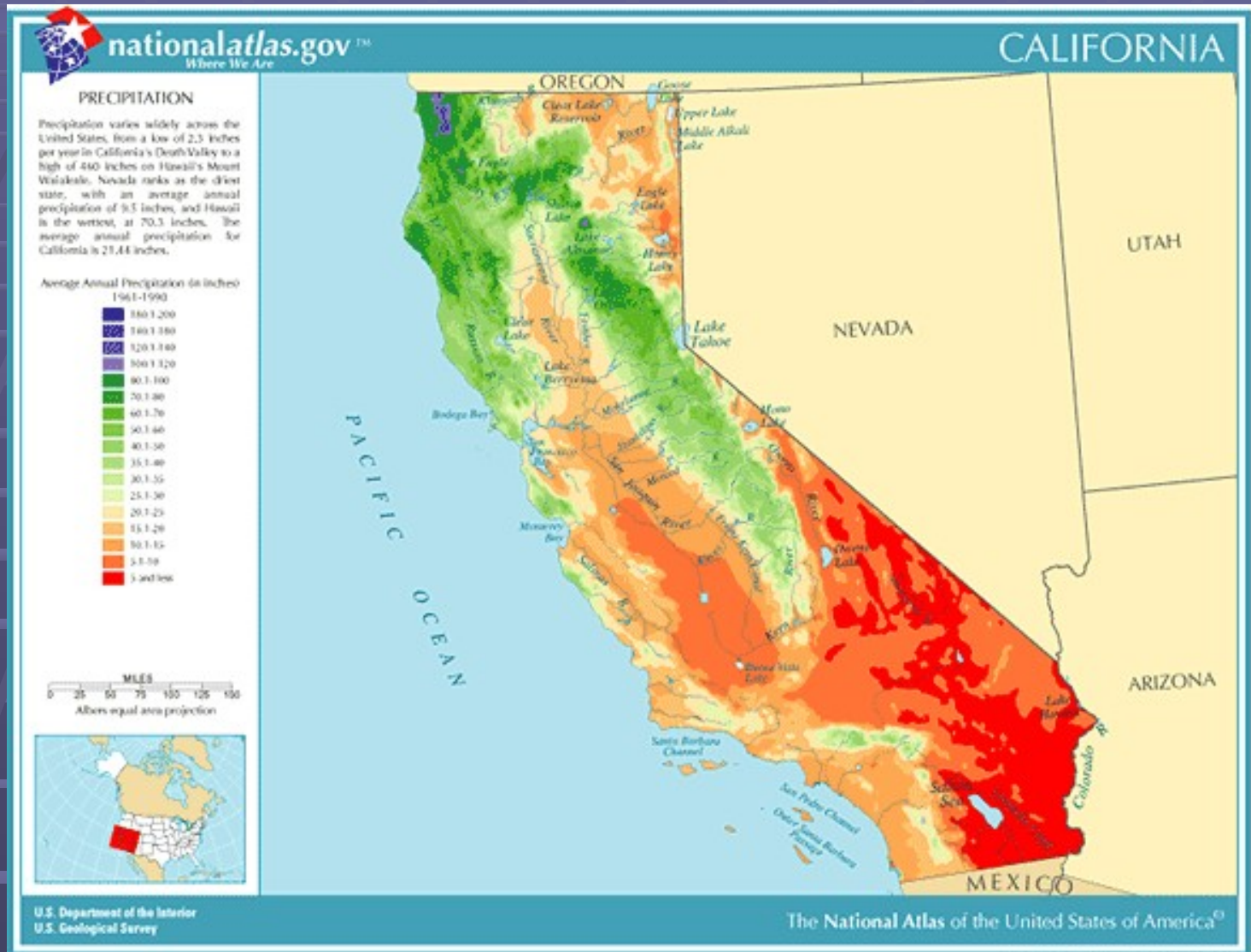
GOALS

RECOMMENDED ACTIONS

SPECIAL FOCUS – BAY DELTA

YOUR ROLE

Adjust to meet the natural limits of California's waters and waterways



Recognize value of ecosystems and the life they support which must have adequate and clean water to exist and thrive



Maximize environmentally sustainable local water self-reliance



Respect the right to safe, sufficient, affordable and accessible drinking water



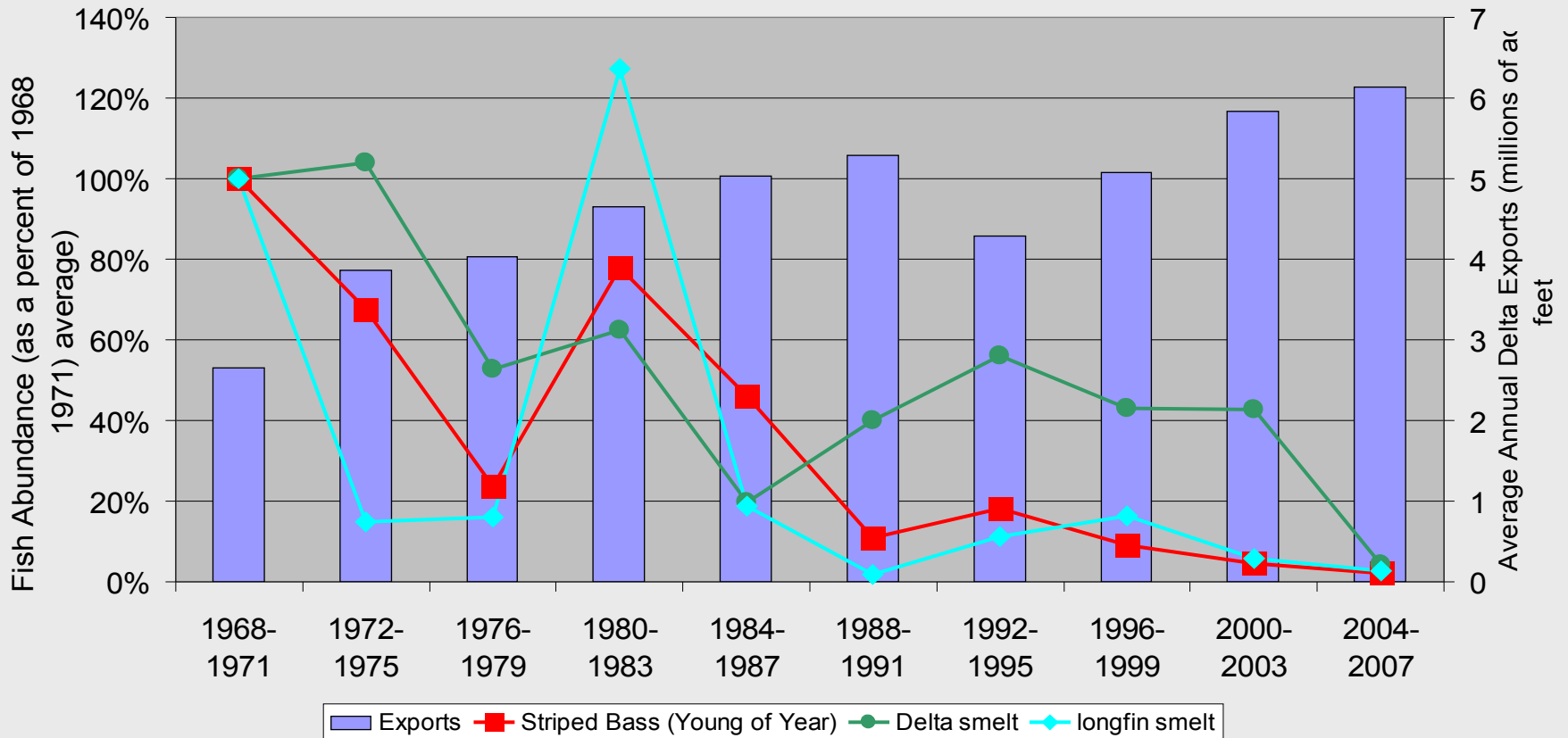
WATER BY THE NUMBERS

- 1 acre-foot = 325,900 gallons
- 1 acre-foot covers a football field 1 foot deep
- An urban family uses 0.5 acre-feet/year
- California Urban Water Use 9 MAF/Yr
- California Agricultural Use 34 MAF/Yr
- South Coast Use 5 MAF/Yr
- Per Capita Use in GPD
 - So. Cal 110 GPD
 - S.F. 63 GPD
 - Sacramento 280 GPD
- Urban Water Cost \$800- \$1,000/AF
- Agricultural Water Cost \$50-\$200/AF

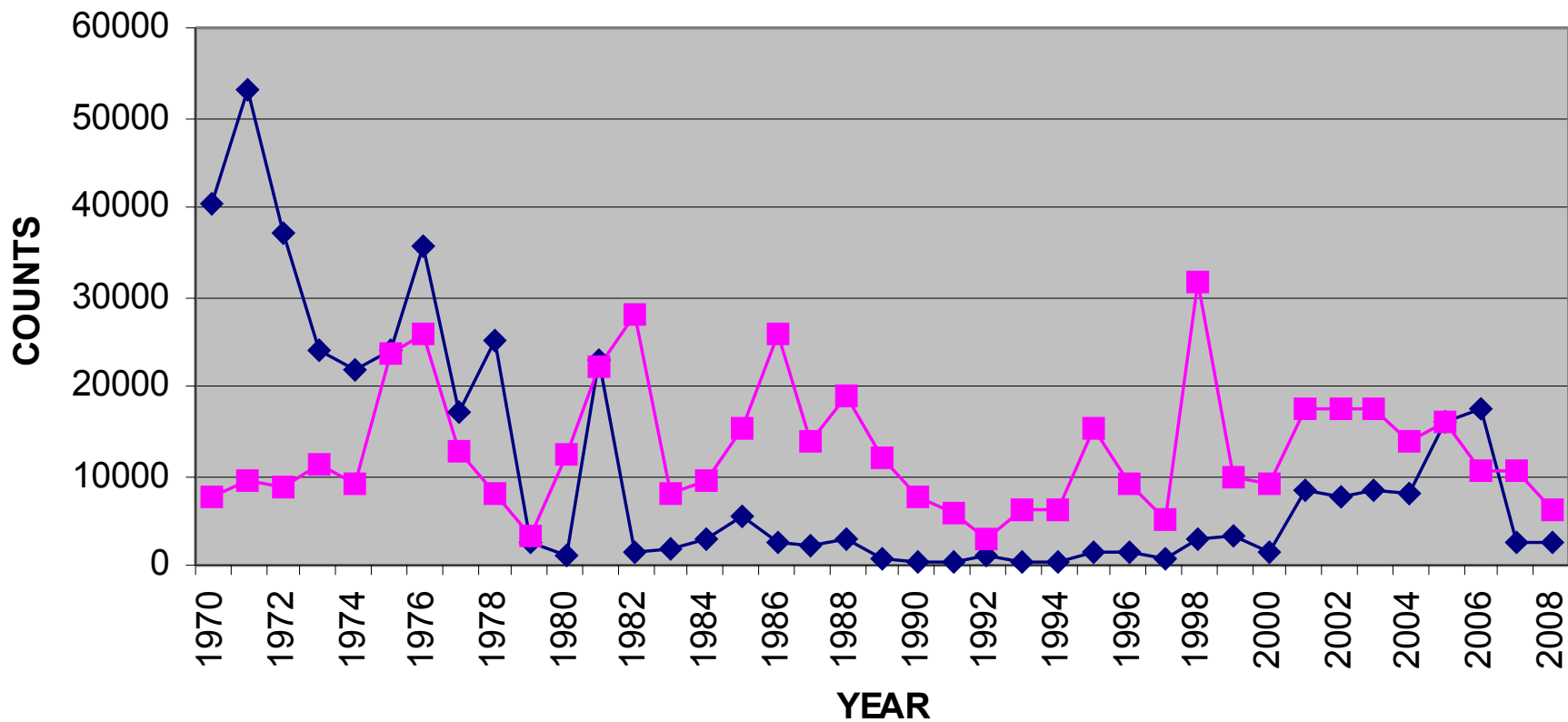
THE PLAYERS

- DEPT OF WATER RESOURCES
- DEPT OF FISH & GAME
- STATE WATER RESOURCES CONTROL BOARD
- BUREAU OF RECLAMATION
- DELTA STEWARDSHIP COUNCIL
- BAY DELTA CONSERVATION PLAN
- AG & URBAN WATER DISTRICTS

Historic Delta Exports and Estuarine Fish Populations



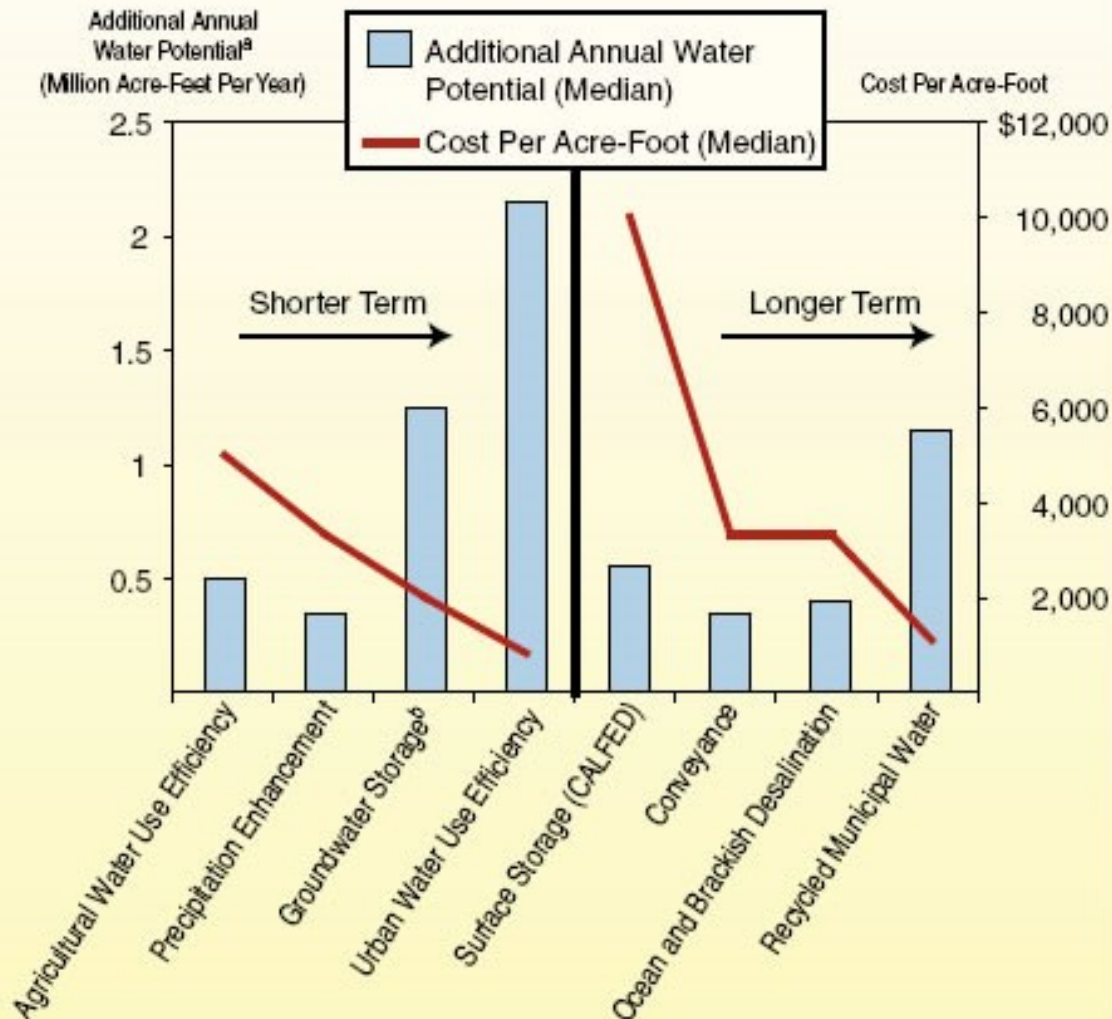
CHINOOK SALMON COUNTS ON THE SACRAMENTO RIVER



◆ WINTER RUN ■ SPRING RUN

Figure 2

Options for Additional Water Supply: Benefits and Costs

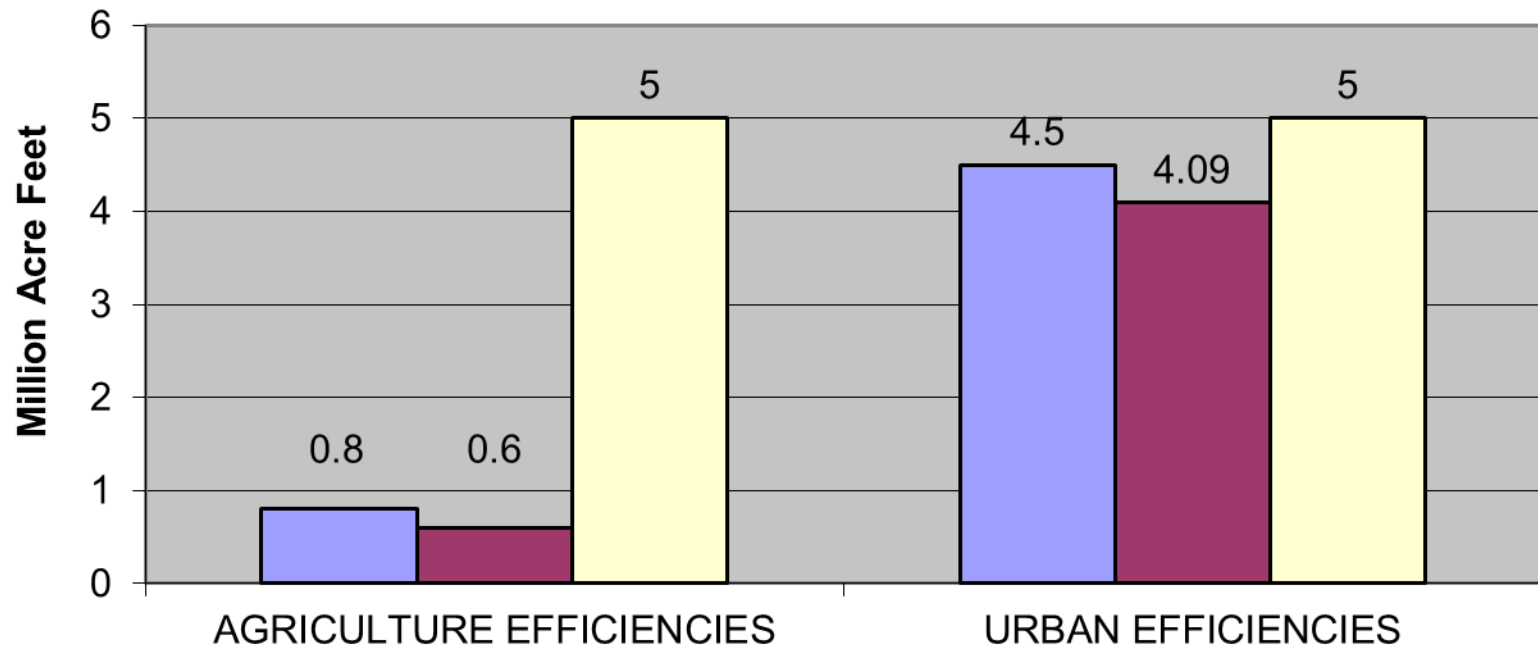


^aReflects the midrange of estimates of water supply development potential of particular solutions, Department of Water Resources, California Water Plan 2005.

^bIncludes integrated management of groundwater and surface water.

Projected Water Savings from Efficiency Measures

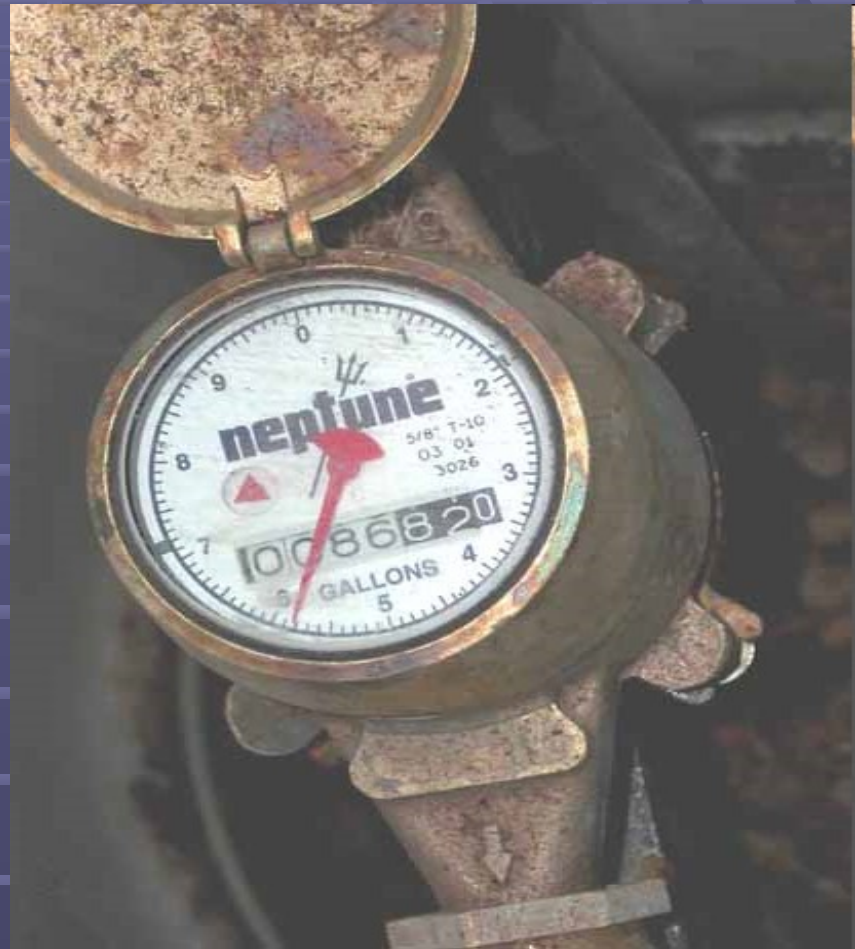
PROJECTED WATER SAVINGS



■ BULLETIN 160-05 ■ PCL ■ PACIFIC INSTITUTE

URBAN WATER USE

- Promote Water Efficiency
 - Water Reuse, Recycling, and Conservation
 - Efficiency Targets In Local Water Budgets
 - Stormwater and Rainwater Retention
- Require New Housing Developments To Be Water Neutral
- Install Urban Water Meters And Implement Strongly Tiered Rates



AGRICULTURAL WATER USE

- Retire Drainage Impaired Lands
- Oppose New Taxpayer Subsidized Dams, And An Expanded Shasta Dam
- Measure And Manage Groundwater Statewide
- Reform Water Rights
 - Paper Water



ECOSYSTEMS IMPROVEMENTS

- Improve Flows
- Provide Cold Water below dams
- Support San Joaquin River Restoration
- Provide Fish Passage around Rim Dams
- Support Wild and Scenic River Designations



DRIVERS

- Sustainability & Natural Limits
 - Public Trust Doctrine
- Efficiency
- Economics / Taxes
- Human rights to water

SPECIAL FOCUS – BAY DELTA

- ❑ DELTA STEWARDSHIP COUNCIL – DELTA PLAN
 - Various Alternatives, incl. EWC alternative
 - Reduce Exports to 3 M.A.F.
 - Improved flows - SWRCB
 - Compensate with efficiency and ag land retirement
 - Public Trust balancing
 - Proposed Project – Not Valid as CEQA

- ❑ BAY DELTA CONSERVATION PLAN (BDCP)
 - 15,000 C.F.S. Tunnel / Canal

- ❑ RECOMMENDATION
 - Delta Plan – Accept EWC Alternative as Proposed Project
 - BDCP – Evaluate All Alternatives, incl. EWC alternative

THREATS

- ❑ Delta Plan – Setting up to Accept BDCP
More Water for SJ Agriculture and SoCal
Urban Use
- ❑ Impact on Water Rates
\$15 Billion going to \$60 Billion
MWD projecting 4-5% increase over 4-5 years
Based on \$15 Billion estimates
Extraordinary increase in SoCal rates
Less costly alternatives
- ❑ Every major watershed impacted
Fish, wildlife, and sustainability impacts

DELTA CONNECTIONS



SUMMARY

- ❑ GOALS
- ❑ RECOMMENDED ACTIONS
- ❑ YOUR ROLE
 - ❑ Awareness of Bay Delta Impacts
 - ❑ Action Alert:
 - ❑ www.ewccalifornia.org



“California Water Solutions Now”

www.ewccalifornia.org